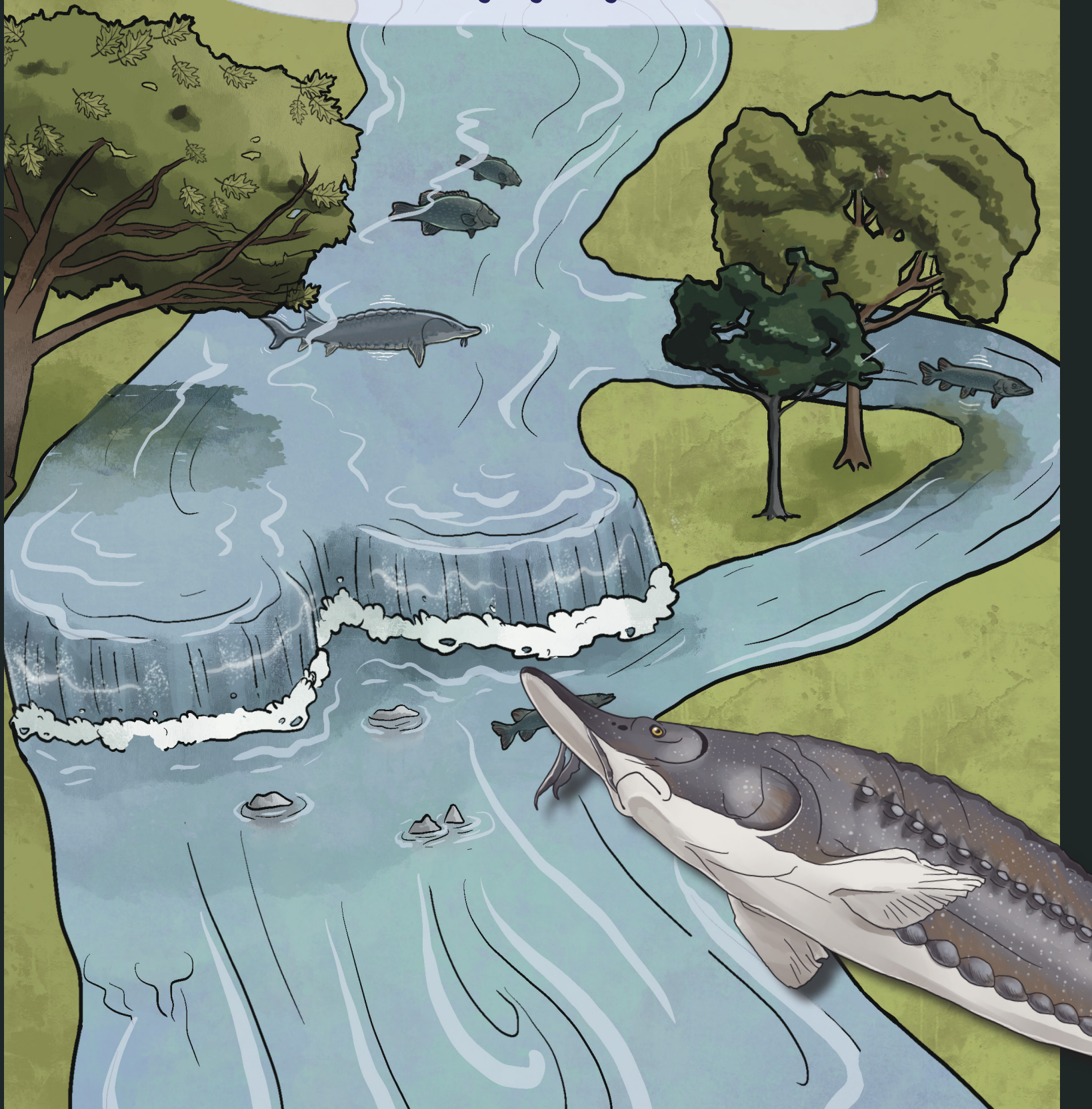


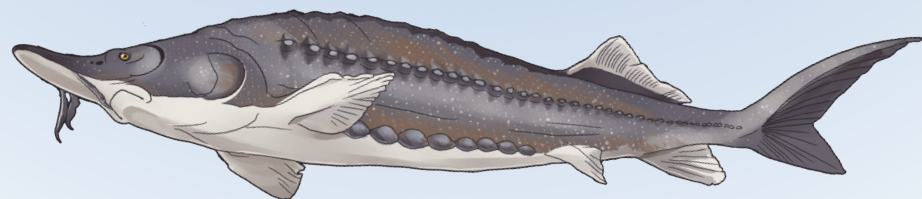
I AM A RIVER

*Story by Michael Alan Timm
Illustrated by Sydney Hoffman*



I AM A RIVER

*The Kletzsch Dam Fishway
and what it means for our
relationship with the
Milwaukee River*



*This story takes the
perspective of the Milwaukee
River over the past few
hundred years of change.*

*If the river could speak, what
do you think it would say?*

*Story by Michael Alan Timm
Illustrated by Sydney Hoffman*

MMXXIII

**"I am
a river."**

**The Gathering Place of the Waters
for generations prior to 1833...**



American Beaver
Castor canadensis

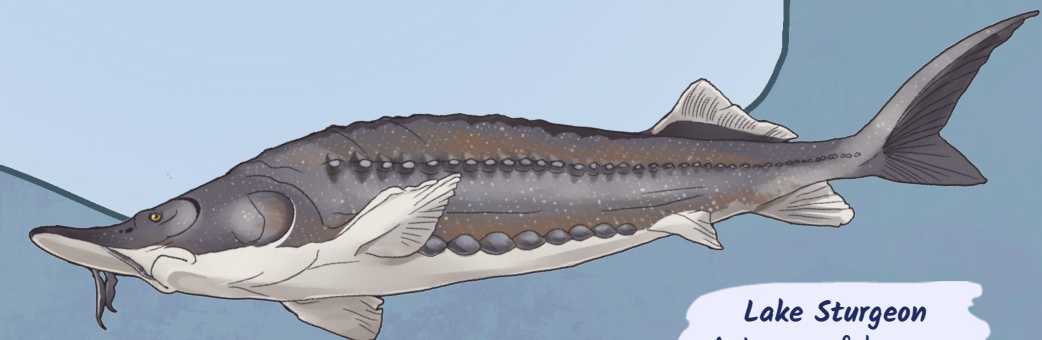


Great Blue Heron
Ardea herodias

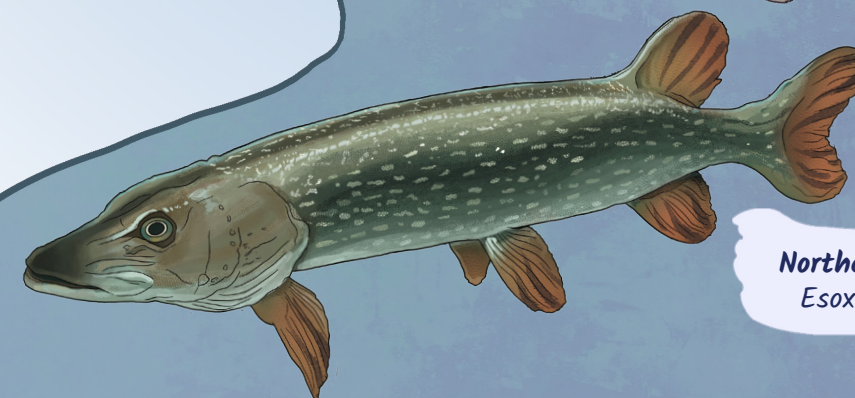


Humans
Homo sapiens

Wild Rice
Zizania palustris



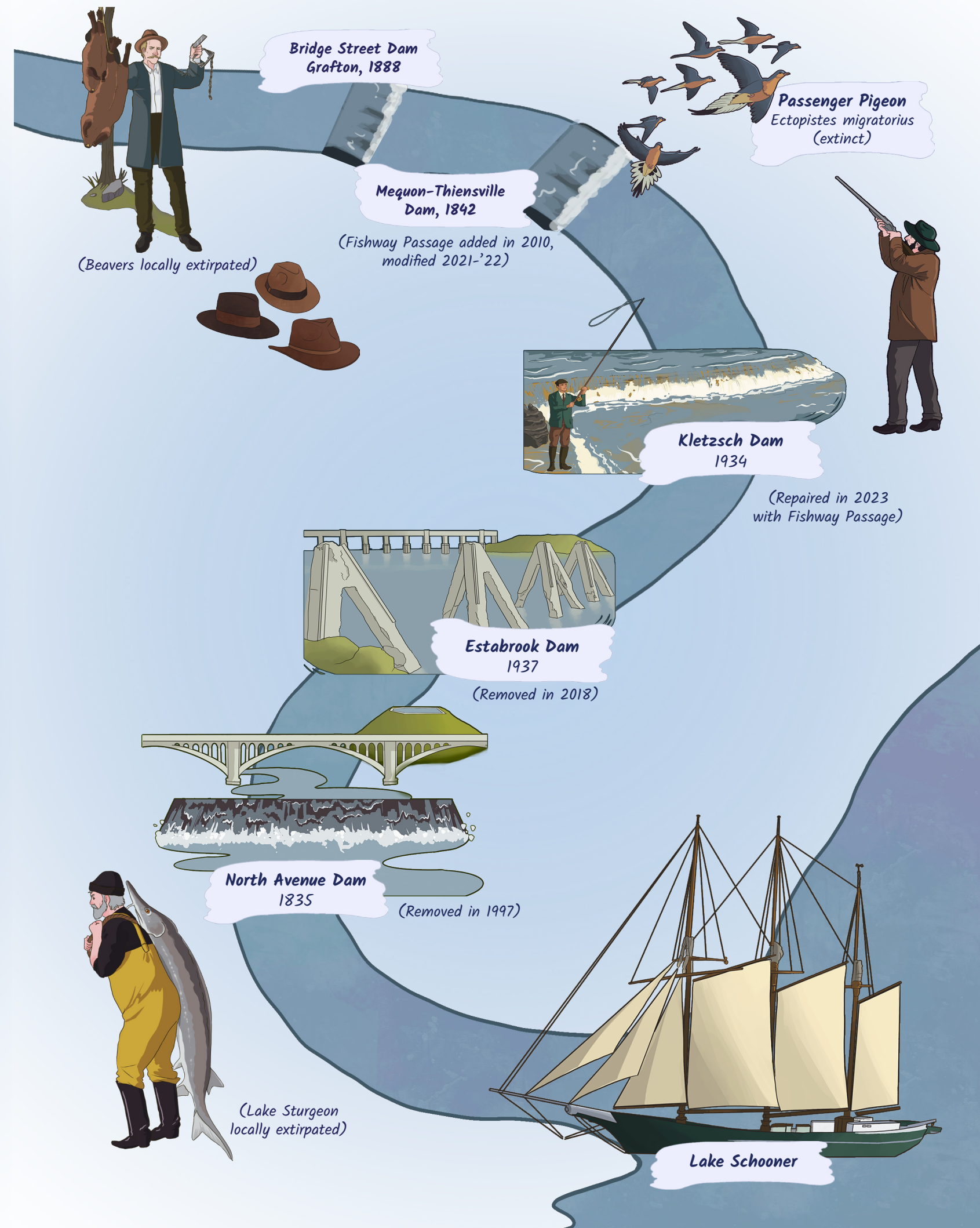
Lake Sturgeon
Acipenser fulvescens



Northern Pike
Esox lucius

**“They
dammed
me.”**

**Milwaukee River Basin
during the 1800s**



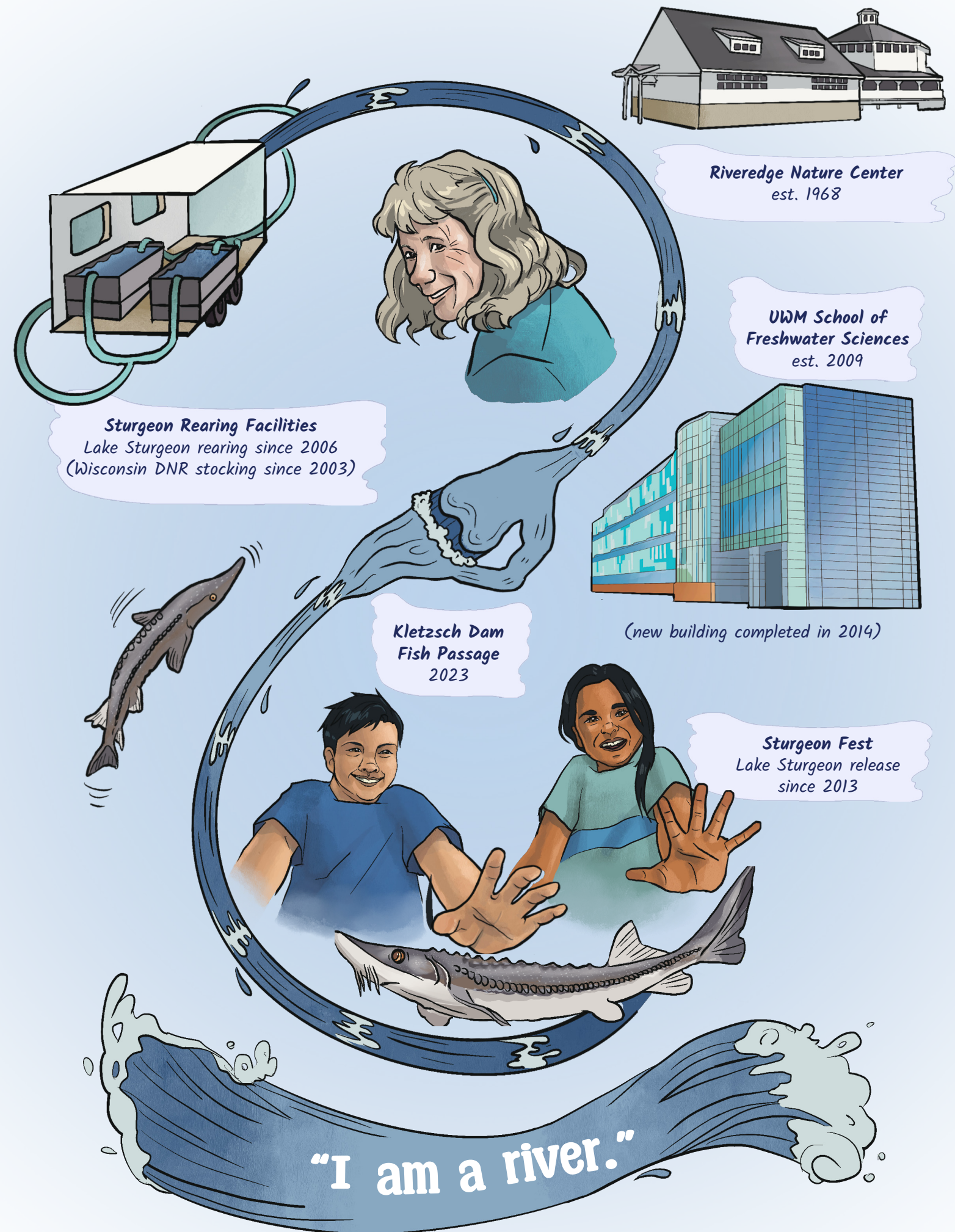
**“They
almost
forgot
me.”**

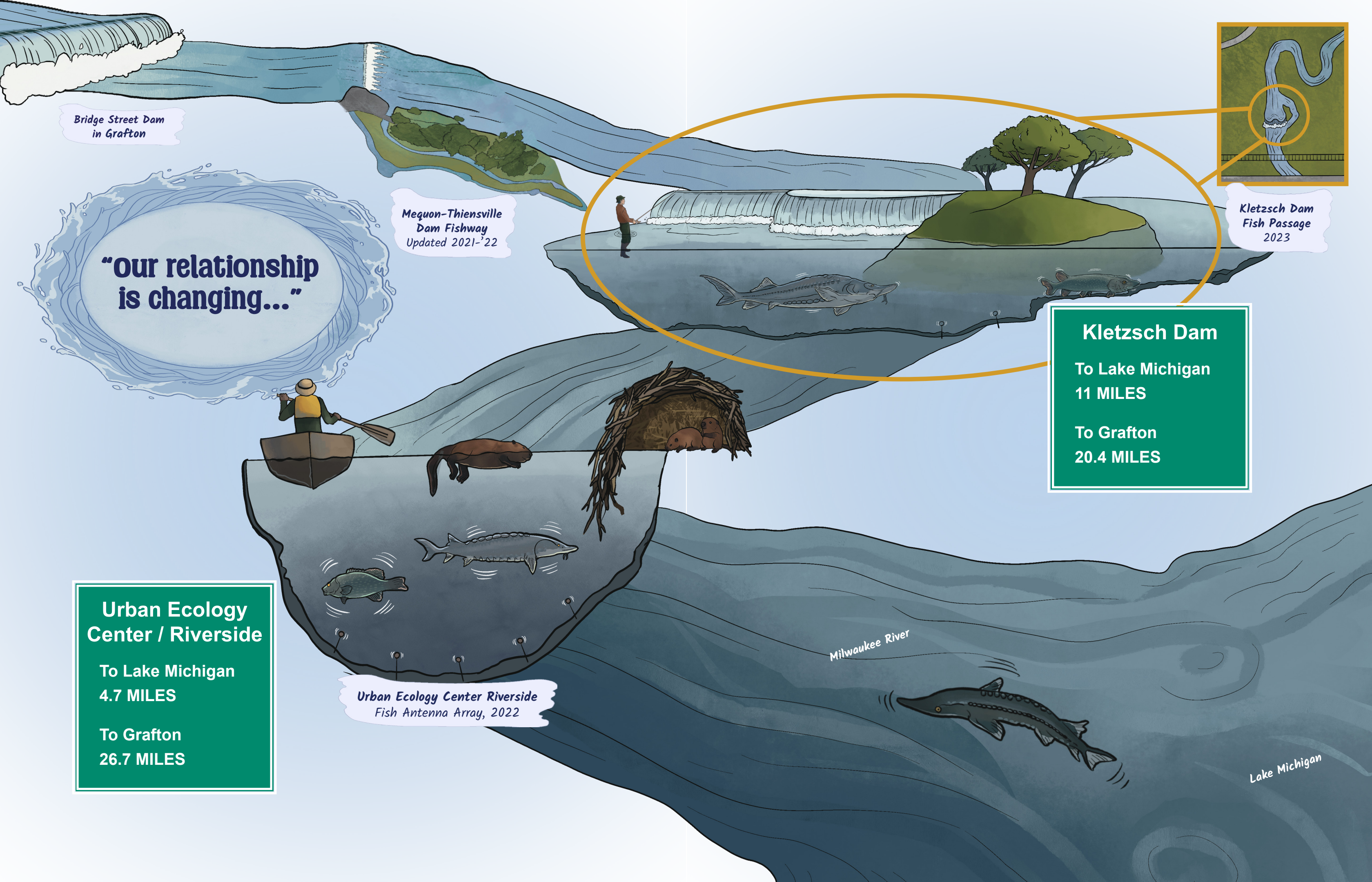
**Milwaukee River Basin
in the 20th Century**



**“And
yet...”**

**Milwaukee River Basin
in the 21st Century**





Bridge Street Dam
in Grafton

**"our relationship
is changing..."**

Mequon-Thiensville
Dam Fishway
Updated 2021-'22

Kletzsch Dam
Fish Passage
2023

Kletzsch Dam

To Lake Michigan
11 MILES

To Grafton
20.4 MILES

Urban Ecology Center / Riverside

To Lake Michigan
4.7 MILES

To Grafton
26.7 MILES

Urban Ecology Center Riverside
Fish Antenna Array, 2022

Milwaukee River

Lake Michigan



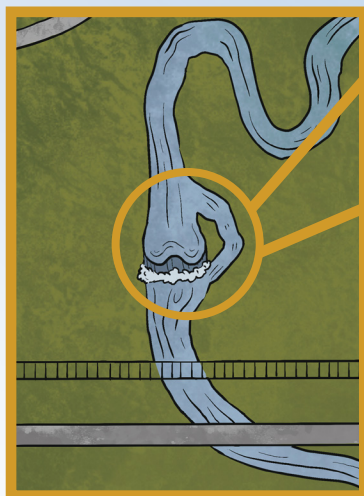
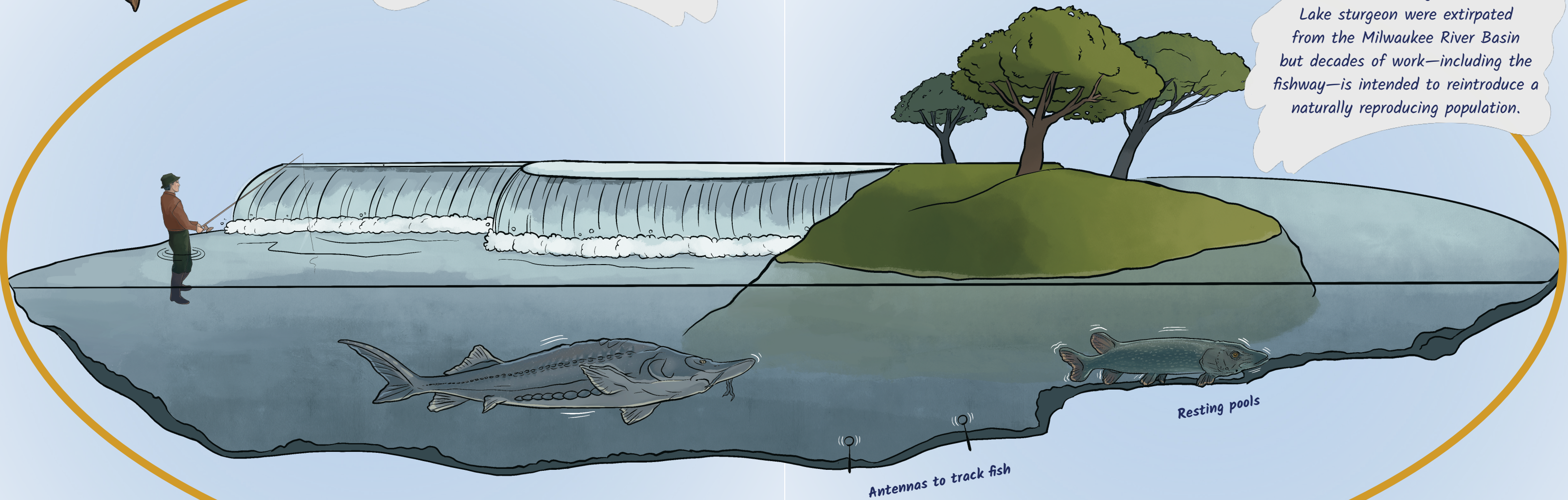
Northern Pike

The Kletzsch Fishway is designed with resting pools to help native fish like Northern Pike swim around the dam's turbulent waters to reach upstream habitat.



Lake Sturgeon

Lake sturgeon were extirpated from the Milwaukee River Basin but decades of work—including the fishway—is intended to reintroduce a naturally reproducing population.



Kletzsch Dam Fishway
bypass for fish constructed in 2023

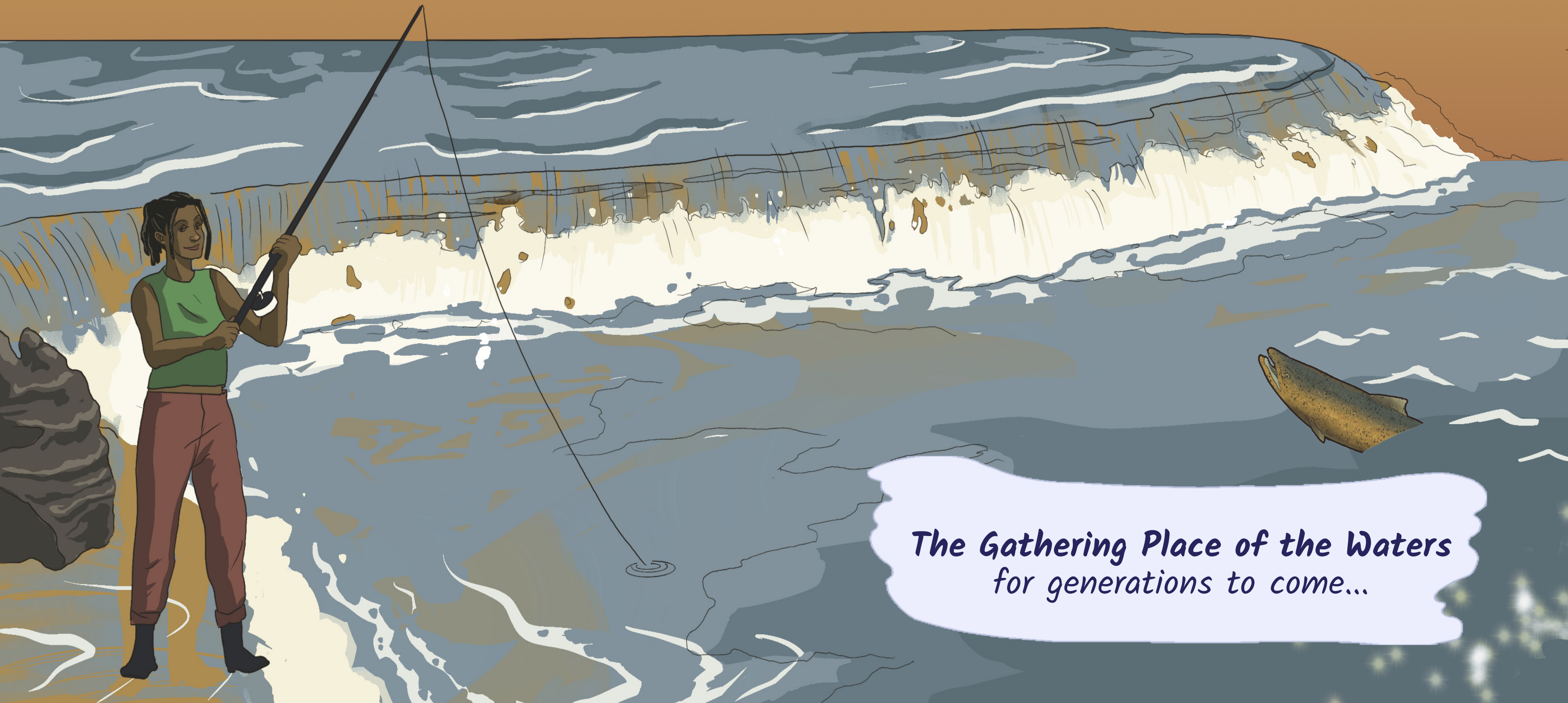
**“Aha!
A new
way.”**

**Kletzsch Dam Fishway
bypass for fish constructed in 2023**



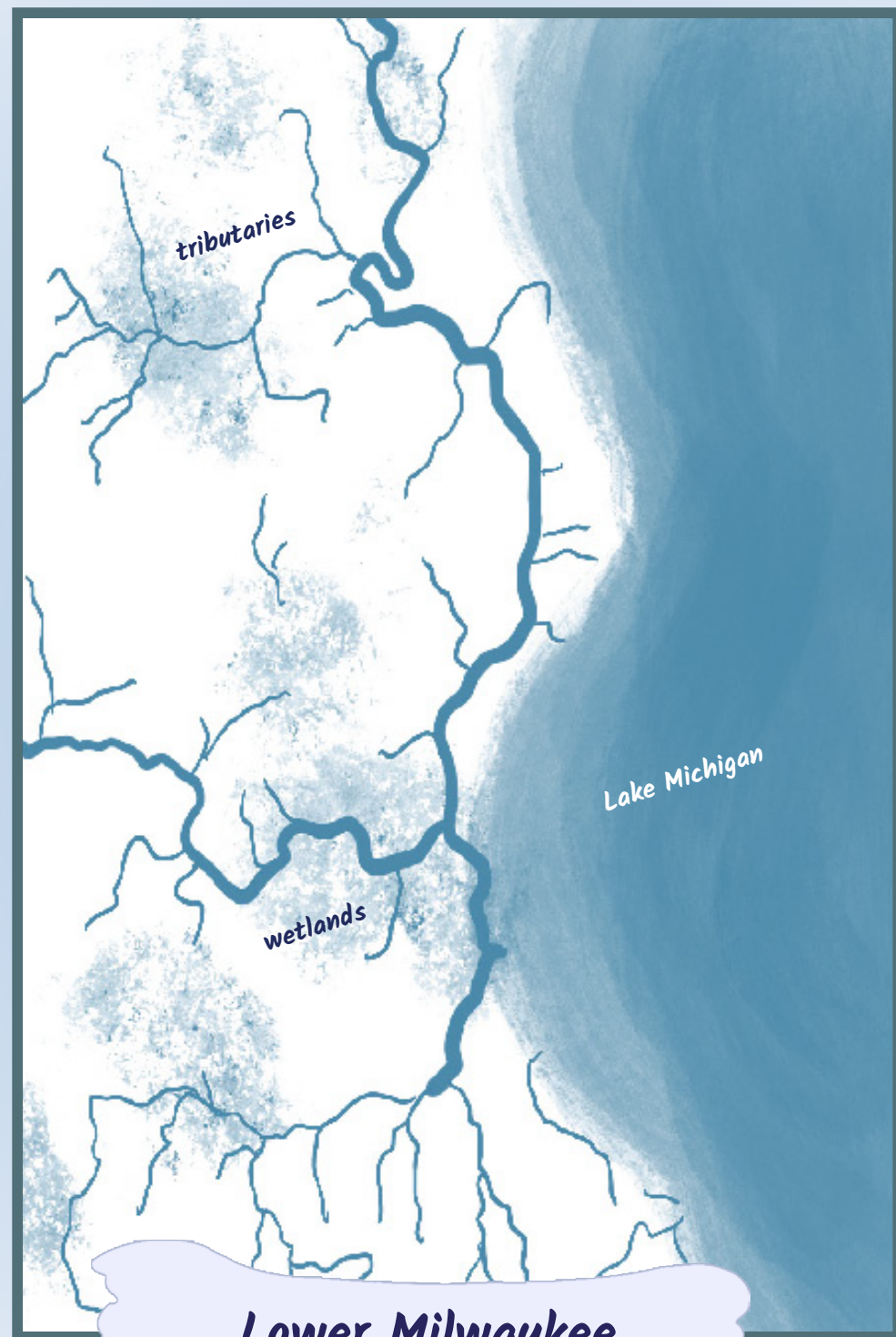
**"I am
a river!"**

**"You are
part of me."**



***The Gathering Place of the Waters
for generations to come...***

River & Land: Map

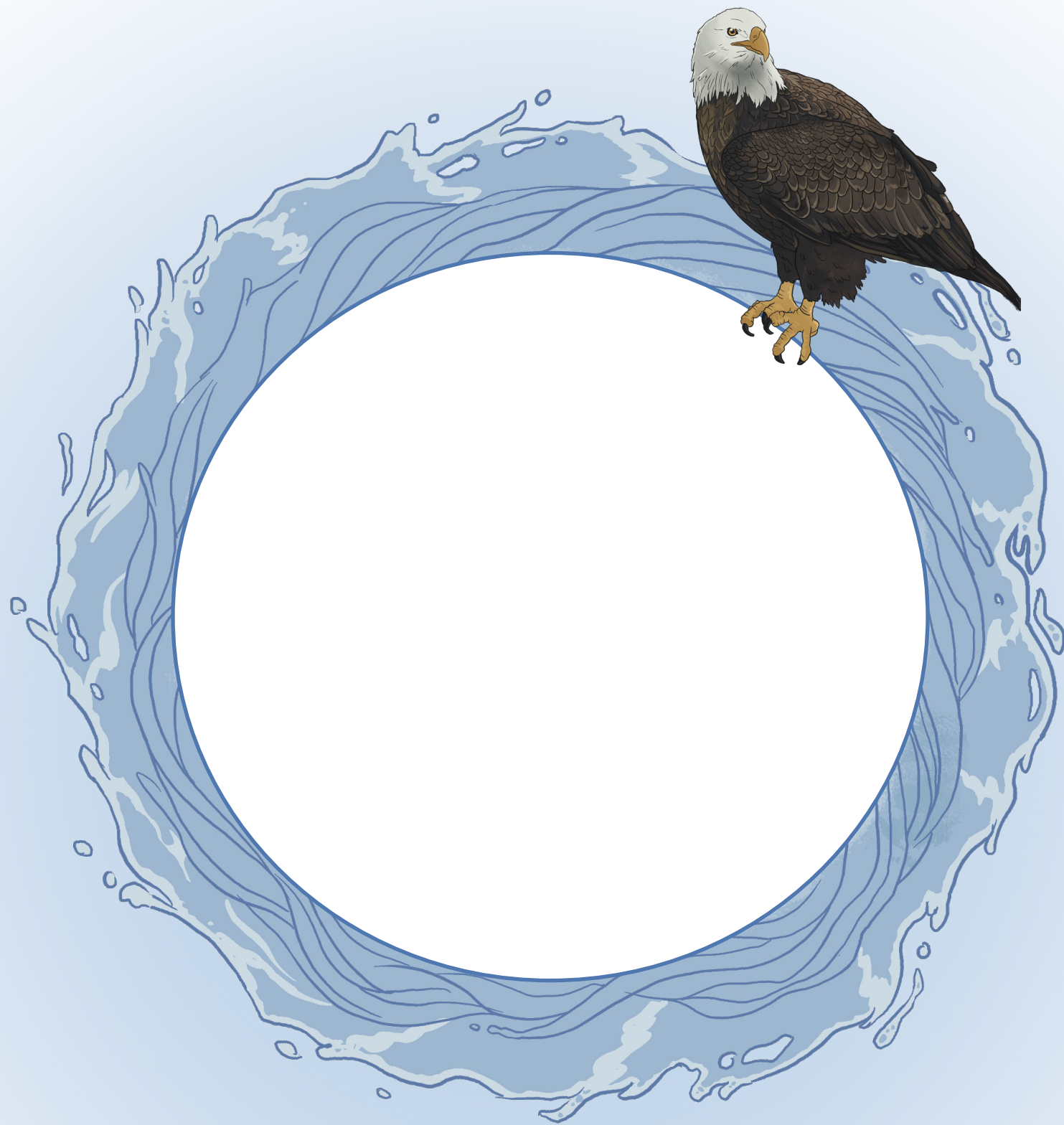


**Lower Milwaukee
River Basin**
1700s-1800s

River & Land: Map

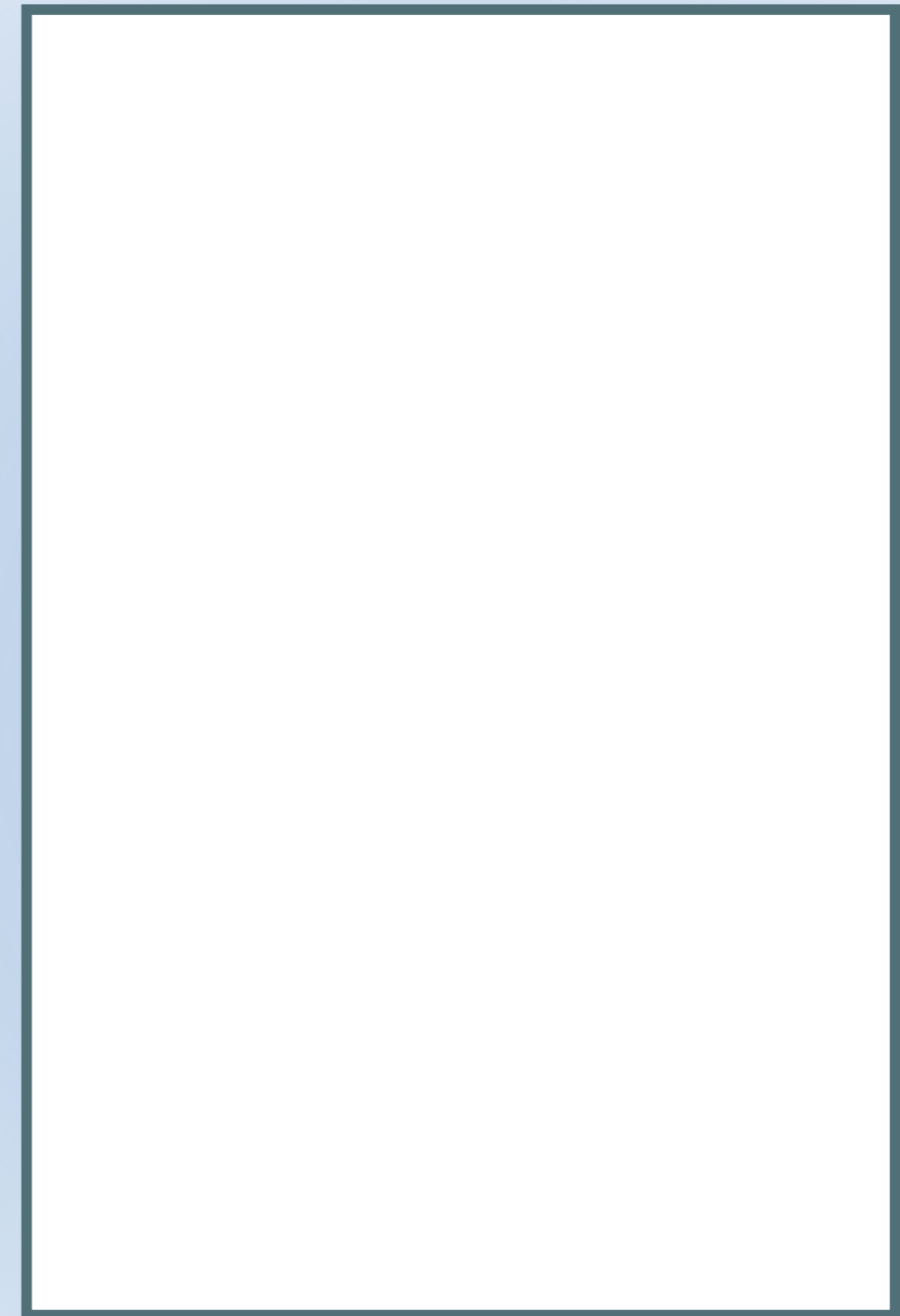


**Lower Milwaukee
River Basin**
1900s-2000s



*Draw the next chapter of life
for your generation & the next...*

River & Land Map

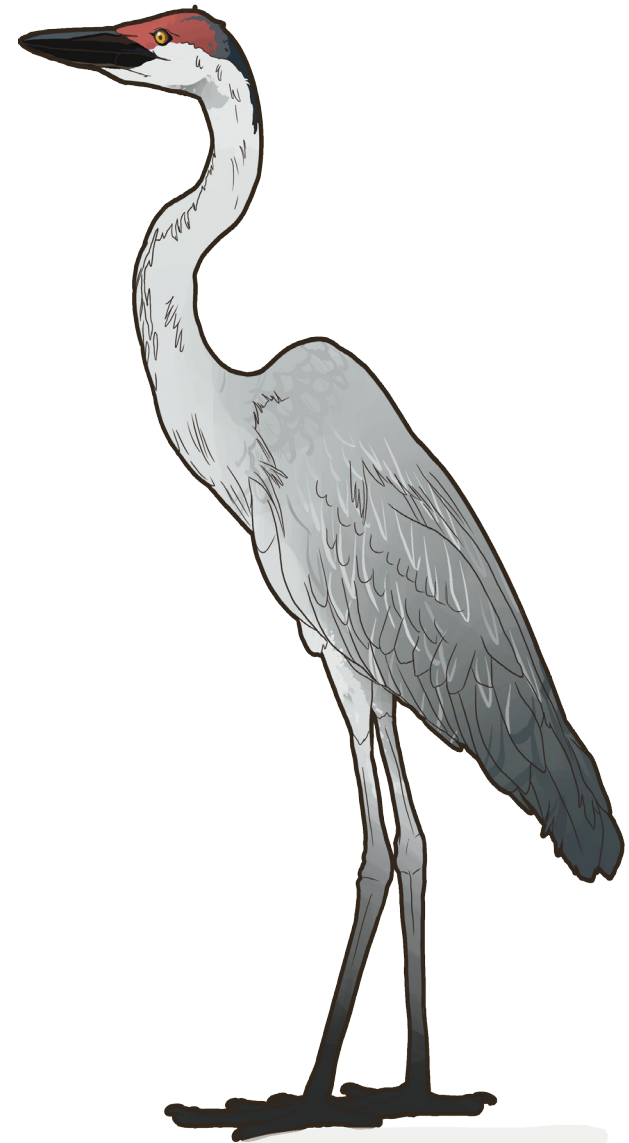


*What does our future look like?
for your generation & the next...*

Write the next chapter of our river
on the pages that follow...



Sandhill Crane
Antigone canadensis



Sandhill Crane
Antigone canadensis



This project is funded by the Wisconsin Department of Administration, Wisconsin Coastal Management Program and the National Oceanic and Atmospheric Administration under the terms and conditions of Wisconsin Coastal Management Program Grant Agreement No. AD239125-024.21.

Funded by the Wisconsin Coastal Management Program and the National Oceanic and Atmospheric Administration, Office for Coastal Management under the Coastal Zone Management Act, Grant # NA22NOS4190085.

Look for the companion articles originally published online in Urban Milwaukee.

The entire series is published by the nonprofit Reflo.